



Wellness at Home

KLAFS CUSTOM SAUNAS & SPA SUITES

OFFICIAL PARTNER OF

KLAFS
MY SAUNA AND SPA

Table of Contents

THE PROCESS	1
CUSTOM KLAFS SAUNAS	6
AURA SAUNA	8
AURORA SAUNA	11
CASENA SAUNA	13
CHALET SAUNA	15
MATTEO THUN SAUNA	17
PREMIUM SAUNA	19
PURE SAUNA	22
S11 SAUNA	24
SHAPE SAUNA	26
TARAS OUTDOOR SAUNA	28
EXCLUSIVE SAUNA HEATER TECHNOLOGY	30
BONATHERM HEATER	31
MAJUS HEATER	32
FERO HEATER	33
SANARIUM®	34
INFRARED HEAT: INFRAPLUS BACKREST & SMART SEAT	35
STEAM ROOMS	36
D12 STEAM ROOM	37
D12 ORO NERO STEAM ROOM	38
MATTEO THUN STEAM ROOM	39
QUADRANO STEAM ROOM	40
CUSTOMIZABLE STEAM ROOM	41
RELAXATION	42
SWAY LOUNGER	43
LINEA HEATED LOUNGER	45
MOLLIS® SAUNA CUSHIONS	47
INSPIRATION	49

The Process

KLAFS CUSTOM SAUNAS AND SPA SUITES ARE DESIGNED BY DFL TO FIT YOUR SPACE, STYLE AND NEEDS.



designforleisure.com/residential



THE PROCESS

01.

YOUR CUSTOM DESIGN

Every KLAFS sauna from Design for Leisure (DFL) is made to order to fit seamlessly with a home's unique style and decor. All saunas and spa suites are customized to match each individual client's needs. DFL works with you and, ideally, your appointed interior designer and/or architect to create your perfect wellness environment. The process starts with a design consultation to establish your unique design parameters. This is when you'll specify the exact sauna style, features and finishes you love, as well as any additional equipment, including a steam room, cool down experience or relaxation area. We encourage clients to consider including both the cool down and relaxation elements of at-home wellness in order to experience the full benefits of hydrothermal care. Next, DFL's team of hydrothermal design experts will create technical drawings and equipment specifications for your design and construction team to review. Only after all plans are approved and signed off on will we move to the manufacturing phase.



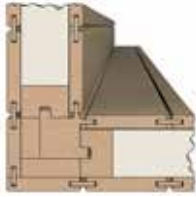
THE PROCESS

02.

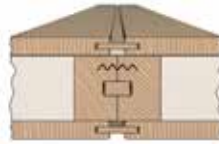
MADE-TO-MEASURE, HANDS-ON MANUFACTURING

Expert craftsmen located in KLAFS' factory in Germany execute your designs. KLAFS manufactures in batches of one—meaning every order is unique and no two KLAFS custom saunas are ever the same. Numerous quality controls take place during the course of production, beginning with incoming goods (meticulously matches woods to create a visually consistent product) and continue with visual checks during each stage of production to make sure the end product is exceptional.

When it comes to quality, KLAFS makes no compromises. This is reflected in everything KLAFS does—from the way wood is purchased, handled and processed to how sauna heaters and control panels are manufactured and, crucially, to their commitment to safety protocols and certification specifications for the USA market.



1. Corner post with tongue-and-groove joint.



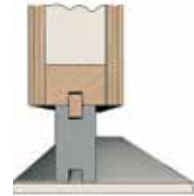
2. Connection of the wall panels with deep tongue-and-groove joints.



3. Wall to ceiling connection with deep-groove joint.



4. Frame with double-groove, double-tenon joints for optimum stability.



5. Wood at socket joint is specially treated to insure extra durability.



6. Stable door frame.



7. Head block and bench both glued and screwed.



8. Supporting lath, screwed.

THE PROCESS

03.

EXPERT INSTALLATION

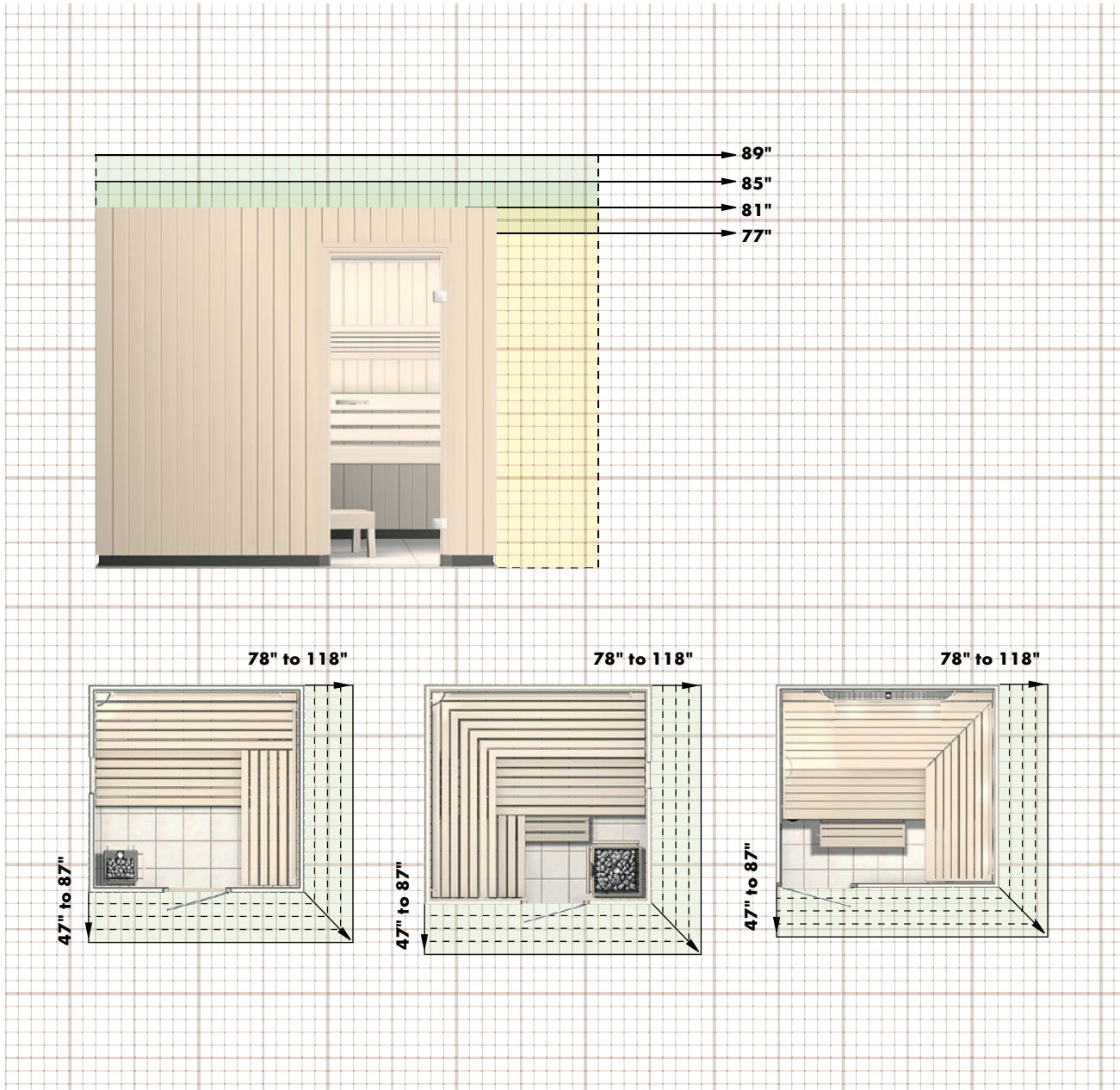
Hydrothermal areas not only require detailed planning, but also expert installation. Once your customized wellness suite is handcrafted, DFL handles all the details to ensure its safe arrival from KLAFS' factory in Germany to your project site in the USA. Then, factory-trained technicians schooled in installing KLAFS wellness products are deployed to work with your contractor and any necessary electrical engineers and plumbers to install your world-class, prefabricated sauna, as well as any additional features. DFL installation managers will walk you—and anyone in your household—through all its functions so you can begin enjoying the benefits of at-home wellness immediately.

Rest assured, when buying from Design *for* Leisure, you will receive luxury treatment from start to finish.

Sauna Sizing Guide

FLEXIBLE SOLUTIONS FOR ALL ROOMS

Most KLAFS saunas feature flexibility for width, depth and height. Our tailor-made solutions can be adjusted in increments of 2 to 4 inches (5cm to 10cm). Further variations available upon request.



Custom KLAFS Saunas

IT ALL STARTS BY PICKING YOUR STYLE.



designforleisure.com/residential



What's Your Vibe?

KLAFS offers a wide range of sauna styles to suit all tastes and wellness needs. The hardest part will be picking your favorite. Though KLAFS offers some standard-sized sauna models, we customize units to your unique needs. KLAFS' expert craftsmen in Germany create our made-to-measure DFL solutions to fit even the most difficult spaces—no nook or cranny is too difficult to navigate. Choose between hundreds of finishes and special features as unique and individual as your home.

AURA Sauna



Modern meets cozy in the AURA Sauna. The continuous glass fronts show off the sleek benches, creating the illusion that the benches are floating. The interior has a streamlined yet homey atmosphere thanks to KLAFS' hygienic MOLLIS sauna cushions, a comfortable alternative to traditional wooden headrests and backrests.



AURA Sauna



FEATURES

Benches

Standard benches available in obeche, optional upgrades available in solid hemlock or walnut. Bench configuration will vary depending on the sauna size.

Exterior

Available in a variety of finishes.

Optional Features

Sanarium® Multi-Climate Sauna Technology (page 34);
InfraPLUS Backrest (page 35); MOLLIS Cushions (page 47);
Accent Lighting (more details upon request)

Interior Finishes

See the next page for swatches.

Available in 11 different finishes.
Vertical or horizontal panelling
available.

Size: A tailor-made solution, size can be adjusted in increments of 2" to 4" (5cm to 10cm). See guide on page 5.

AURA Sauna

Interior Finishes



SCANDINAVIAN SPRUCE



SCANDINAVIAN SPRUCE MHQ



SCANDINAVIAN SPRUCE MMQ



SCANDINAVIAN SPRUCE GPQ



SCANDINAVIAN SPRUCE MBQ



HEMLOCK SOFTLINE



HEMLOCK VENEER
CROSS JOINTS



HEMLOCK VENEER



WALNUT VENEER



WENGE VENEER



SWISS STONE PINE VENEER



OBEČE
(Available for Benches Only)

AURORA Sauna



The AURORA Sauna transforms your home into an exclusive spa oasis. One highlight inside the elegant hemlock interior, with its 'floating' benches and comfortable sauna cushions, is the organic, EUKLID illuminated ceiling. Even when viewed from the outside through the large glass front, the sculptural ceiling and streamlined benches create an elegant interior statement—making the AURORA Sauna both a relaxing retreat and a work of art.



AURORA Sauna



FEATURES

Benches

'Floating' benches in obeche, hemlock or walnut. Bench configuration varies depending on sauna size.

Exterior

Exterior panelling with large, frameless glass front upon request.

Additional Features

The EUKLID illuminated ceiling, which curves organically in 3D, creates unique ambient light and a visual statement.

Interior Finishes



HEMLOCK VENEER



WALNUT



OBECHE
(Available for
Benches Only)

Size: Numerous standard sizes available. Minimum size requirement: 83" x 83" (W x D).

CASENA Sauna



Large-scale wenge or hemlock interior panelling, benches made from the same wood and a clear glass door all add up to a sauna that exudes symmetry, harmony, elegance and spaciousness. Nothing will distract you from the zen-like experience the CASENA Sauna delivers.



CASENA Sauna



FEATURES

Benches

'Floating' benches available in hemlock. Bench configuration varies depending on sauna size.

Exterior

Exterior panelling available in a variety of wood finishes.

Optional Features

Sanarium® Multi-Climature Sauna Technology (page 34);
InfraPLUS Backrest (page 35); MOLLIS Cushions (page 47);
Accent Lighting (more details upon request)

Size: A tailor-made solution, size can be adjusted in increments of 2" to 4" (5cm to 10cm). See guide on page 5.

Interior Finishes



HEMLOCK



WENGE

Ceiling Panels



HEMLOCK



WENGE

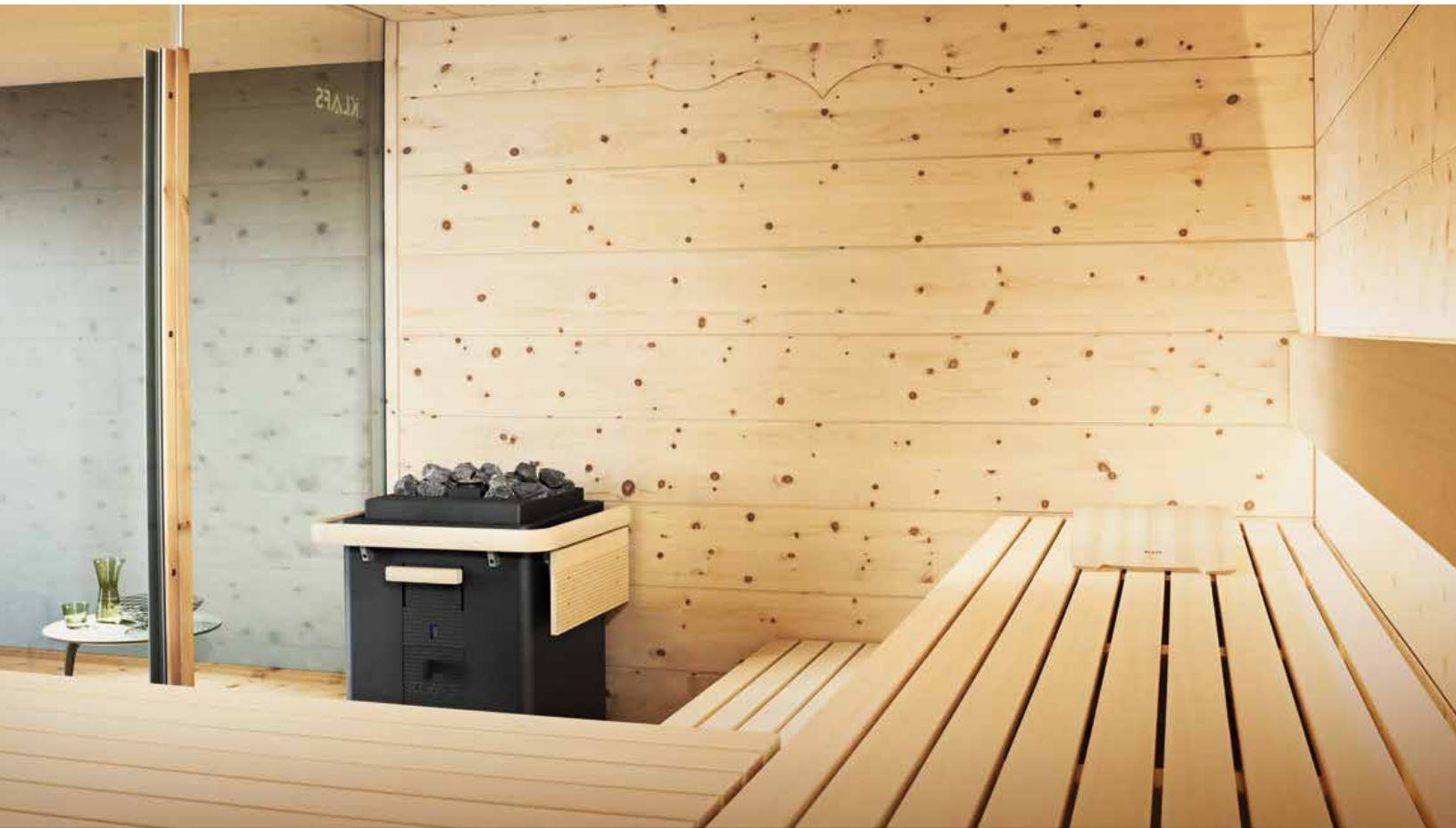
CHALET Sauna



Alpine charm radiates from the vividly marked wood of the Swiss stone pine. The stepped ceiling and decorative elements on the walls create traditional accents, while the streamlined benches bring a modern touch.



CHALET Sauna



FEATURES

Benches

Benches available in obeche. Bench configuration varies depending on sauna size. Matching backrests and headrests also available.

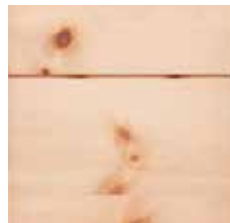
Exterior

A variety of wood finishes, including Swiss stone pine.

Optional Features

Sanarium® Multi-Climate Sauna Technology (page 34); InfraPLUS Backrest (page 35); MOLLIS Cushions (page 47); Accent Lighting (more details upon request)

Interior Finish



SWISS STONE PINE



OBECHE
(Available for
Benches Only)

Size: A tailor-made solution, size can be adjusted in increments of 2" to 4" (5cm to 10cm). See guide on page 5.

MATTEO THUN Sauna



Designed by Matteo Thun and Antonio Rodriguez, the unique design of the MATTEO THUN Sauna is characterized by the interplay of wooden strips and joints. The visual opening to the outside creates a virtuoso performance using the incidental light. Yet, it is almost impossible to see into the sauna from the outside.

See the coordinating MATTEO THUN STEAM ROOM on page 38.



MATTEO THUN Sauna



FEATURES

Benches

Benches available in hemlock or walnut. Bench configuration will vary depending on the sauna size.

Exterior

Unique slat panelling in hemlock or walnut. The entire front wall and part of the side walls feature floor-to-ceiling glass with an integrated glass door.

Optional Features

Sanarium® Multi-Climate Sauna Technology (page 34);
InfraPLUS Backrest (page 35); MOLLIS Cushions (page 47);
Accent Lighting (more details upon request)

Interior Finishes



HEMLOCK



WALNUT

Size: A tailor-made solution, size can be adjusted in increments of 2" to 4" (5cm to 10cm). See guide on page 5.

PREMIUM Sauna



The PREMIUM Sauna is more than a luxury sauna—it's a personal design statement. Let your imagination run wild—the variety of layouts and fittings are surpassed only by the large range of special features and accessories you can select from to create your perfect interior and exterior. A tailor-made solution, the PREMIUM Sauna can accommodate challenging spatial conditions and angled rooms/ceilings.



PREMIUM Sauna



FEATURES

Benches

Benches available in obeche and hemlock. Standard equipment includes headrests, backrests and panels between the benches. Upper corner bench also available.

Exterior

Available in a variety of wood finishes, prepared surface cladding or painting. Design can incorporate existing windows.

Optional Features

Sanarium® Multi-Climate Sauna Technology (page 34);
InfraPLUS Backrest (page 35); MOLLIS Cushions (page 47);
Accent Lighting (more details upon request)

Interior Finishes

See the next page for swatches.

Available in 11 different finishes. Vertical or horizontal panelling available.

Size: A tailor-made solution, size can be adjusted in increments of 2" to 4" (5cm to 10cm). See guide on page 5.

PREMIUM Sauna

Interior Finishes



SCANDINAVIAN SPRUCE



SCANDINAVIAN SPRUCE MHQ



SCANDINAVIAN SPRUCE MMQ



SCANDINAVIAN SPRUCE GPQ



SCANDINAVIAN SPRUCE MBQ



HEMLOCK SOFTLINE



HEMLOCK VENEER
CROSS JOINTS



HEMLOCK VENEER
PANELS



WALNUT VENEER



WENGE VENEER



SWISS STONE PINE VENEER



OBEČE
(Available for Benches Only)

PURE Sauna



This award-winning sauna embodies simple elegance. The mere sight of it is enough to make you relax. A high-gloss exterior panel blends stylishly into any room, while the interior hemlock wall panelling looks particularly elegant thanks to fine, horizontally mounted slats. The simple and elegant design has won prestigious product design awards.



PURE Sauna



FEATURES

Benches

Benches available in hemlock for a uniformed look. Bench configuration will vary depending on the sauna size. Matching headrests and backrests also available.

Exterior

Exterior panelling available in white high-gloss finish with large glass door.

Optional Features

Sanarium® Multi-Climate Sauna Technology (page 34);
InfraPLUS Backrest (page 35); MOLLIS Cushions (page 47);
Accent Lighting (more details upon request)

Interior Finish



HEMLOCK VENEER

Features real wood veneer panels with horizontal staves in solid hemlock.

Size: A tailor-made solution, size can be adjusted in increments of 2" to 4" (5cm to 10cm). See guide on page 5.

S11 Sauna



DESIGN BY STUDIO F. A. PORSCHE

Introducing a truly remarkable sauna experience, meticulously crafted to captivate your senses. KLAFS and Studio F. A. Porsche challenged conventions to create an extraordinary sanctuary. The S11 Sauna's unique environment uses groundbreaking light and sound technology to transport you to enchanting realms of relaxation.



S11 Sauna



FEATURES

Benches

Two-tiered, “floating” benches (straight or L-shaped); steps also provided.

Exterior

Available as a free-standing sauna designed with cabin-high cladding in a high-quality, metallic Champagne finish. Also available as a custom-made, built-in sauna.

Additional Features

Exclusive lighting and sound technology creates five light-sound setting options.

Interior Finish



Horizontal, hemlock wood slats combined with the semi-translucent Japanese “Washi” paper help create the lighting effect unique to the S11 Sauna.

Size: Numerous standard sizes available. Minimum size requirement: 83” x 95” (W x D).

SHAPE Sauna



The SHAPE Sauna's distinctive character is manifested in the elaborate exterior panelling, which creates a very special feel. The corner glass front and eye-catching vertical door handle complete the high-quality impression, which continues confidently in the interior.



SHAPE Sauna



FEATURES

Benches

Standard benches available in hemlock with matching headrests and backrests for uniformed look. Obeche benches also available. Bench configuration will vary depending on the sauna size.

Exterior

Painted exterior panelling with 3D effect in black or white. Also includes a corner glass front with circumferential screen printing, upon request.

Optional Features

Sanarium® Multi-Climate Sauna Technology (page 34);
InfraPLUS Backrest (page 35); MOLLIS Cushions (page 47);
Accent Lighting (more details upon request)

Interior Finish



HEMLOCK VENEER
(Matching Benches
Available)



OBECHE
(Available for
Benches Only)

Size: A tailor-made solution, size can be adjusted in increments of 2" to 4" (5cm to 10cm). See guide on page 5.

TARAS Outdoor Sauna



Your own private retreat in nature. Feed your body and soul with all the benefits nature has to offer—cool down in the fresh air, experience the different seasons and feel at one with nature. Design your own wellness sanctuary with the TARAS Outdoor Sauna—total relaxation surrounded by nature.



TARAS Outdoor Sauna



FEATURES

Benches

Standard benches in Obeche. Also available in American Walnut Waxed, Ash Dark, Ash Nature, and Hemlock.

Exterior

Standard is Douglas Fir glazed in black or gray. Optional finishes include light gray fiber cement, anthracite-dark fiber cement, and metallic light gray fiber cement.

Optional Features

Sanarium® Multi-Climate Sauna Technology (page 34);
InfraPLUS Backrest (page 35); MOLLIS Cushions (page 47);
Accent Lighting (more details upon request)

Interior Finish

Spruce Softline, Ash Nature, Ash Thermo, Hemlock Panel, Walnut, Wenge, Old Wood Imitations

Size: Numerous standard sizes from 75" x 75" x 97" (W x D x H) up to 158" x 100" x 97" (W x D x H).

Exclusive Sauna Heater Technology

KLAFS HEATERS ARE ONLY SOLD FOR USE IN A KLAFS SAUNA.



designforleisure.com/residential



BONATHERM Heater

KLAFS creates another first in sauna technology: under bench heating. BONATHERM heaters make space for additional seats and ensures a balanced temperature in the sauna, while being conveniently tucked away to prevent any accidental burns.

Note: KLAFS Sauna Heaters are only available for use in KLAFS Saunas and can not be purchased separately.

FEATURES

- Only under bench heater of its type certified for use in North America
- With large air outlet, air deflection hood and additional air deflector
- With large stone basket for a filling quantity of approx. 220 lbs of original Finnish olivine stones – for greater heat storage and intensive infusions
- Also available as a SANARIUM® heater (see page 34)
- 31" x 50" x 23" (H x W x D)
- Heater weight approx. 330 lbs (including olivine sauna stones)
- Heater sizes: 1.7kW, 2.2kW, 4.5kW, 6kW and 9kW



MAJUS Heater

The MAJUS free-standing sauna heater looks like a traditional sauna heater, but it's far more high tech with a turbo heat function to heat up your sauna in no time. Add the SANARIUM® option to create a multi-functional sauna experience.

Note: KLAFS Sauna Heaters are only available for use in KLAFS Saunas and can not be purchased separately.

FEATURES

- Certified for use in North America
- Free-standing heater with patented Turboheat function
- Extra-large stone basket for a filling quantity of approximately 132 lbs original Finnish olivine stones – for greater heat storage and intensive infusions
- Also available as a SANARIUM® heater (see page 34)
- Heater weight approx. 251 lbs (including olivine sauna stones)
- Heater sizes: 6kW, 9kW and 12kW; Dimensions 38" x 19" x 19" (H x W x D)
- Heater sizes: 16kW and 20kW; Dimensions 38" x 32" x 20" (H x W x D)



FERO Heater

With its elegant design based on the MAJUS heater, the FERO sauna heater blends harmoniously into our saunas. The FERO heater is compact, free standing and is also available with SANARIUM® function. Flocked sides protect against combustion, while the aluminum-framed stone basket houses authentic Finnish olivine stones.

Note: KLAFS Sauna Heaters are only available for use in KLAFS Saunas and can not be purchased separately.

FEATURES

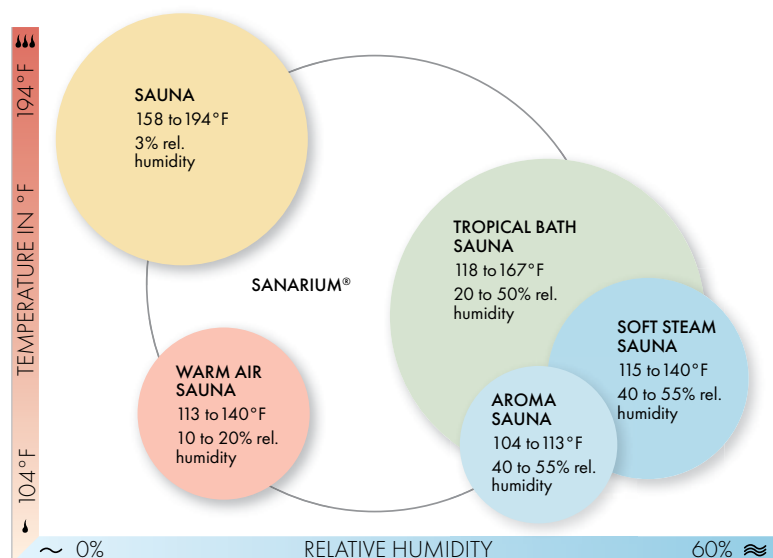
- Certified for use in North America
- Elegant, compact free-standing sauna heater matching the MAJUS design line
- Outer casing and rail protect against risk of burning
- Stone basket made from cast aluminum frame
- Original Finnish olivine stones
- Steam outlet with aroma cup on front
- Quiet, pleasant evaporator noises
- Water tank level indicator
- Also available as a SANARIUM® heater (see page 34)
- Heater sizes: 1.7kW, 2.2kW and 4.5kW



SANARIUM® Technology

URNS ONE SAUNA INTO FIVE HYDROTHERMAL EXPERIENCES

All KLAFS Sauna Heaters (BONATHERM, MAJUS and FERRO) are compatible with KLAFS SANARIUM® system. On demand, a classic Finnish sauna is transformed into a tropical steam room, soft steam sauna, aromatherapy experience or warm air sauna. KLAFS' patented climate regulation enables you to choose between high temperature/low humidity and low temperature/high humidity. By increasing the humidity, the perceived temperature remains constant even when the thermometer drops. This humidity can also be created using fragrant steam. An added bonus is a speaker integrated in the humidity sensor that can fill the sauna with music.



INFRAPLUS BACKREST & SMART SEAT



Targeted Infrared Treatment

InfraPLUS Backrest

The InfraPLUS Backrest option works with all KLAFS Sauna models, providing a “best of both worlds” solution: a multifunctional sauna that combines the therapeutic benefits of targeted longwave infrared-C radiation therapy with the proven physical and mental benefits of traditional, high-heat sauna bathing.

The InfraPLUS Backrest can be adjusted into a number of comfortable positions. So whether you’re enjoying an infrared treatment or a relaxing sauna session, you will always experience luxurious comfort.

InfraPLUS Smart Seat

The InfraPLUS Smart Seat can fit into any wellness suite or bathroom, delivering a pleasant heat application that takes up minimal space.

Steam Rooms

TAKING YOU ONE STEP CLOSER TO RELAXATION.



designforleisure.com/residential



D12 Steam Room

The aluminum and glass construction of the D12 STEAM ROOM creates a fluid transition between your own personal spa and the rest of your home. And thanks to the innovative modular design, the cabin size and seating arrangements are available in multiple configurations to best work within your available space. The D12 STEAM ROOM features luxury teak seats that can be exchanged for natural stone or porcelain stoneware, an elegant hand-held shower and fitted ceiling lights.





D12 ORO NERO Steam Room

The D12 ORO NERO STEAM ROOM is a contemporary variation of the modular D12 glass steam room. A gold floral pattern, set against a black background, stands out in stark contrast, giving the D12 ORO NERO a wholly unique character.





MATTEO THUN Steam Room

Designed by Matteo Thun and Antonio Rodriguez to complement the **MATTEO THUN Sauna** (see page 21), this steam room is a modern take on the traditional all white steam room. Your eye is instantly drawn to the horizontal pattern on the frosted-glass front. As you step inside, you see the pattern continues on the rear and side walls with the deep grooves in the moisture-resistant white quartz. Unique lighting features in the ceiling and back wall complete the light and airy feel.





QUADRANO Steam Room

Everything about the QUADRANO STEAM ROOM speaks to simplicity. The shell of the room is made of hygienic, low-maintenance acrylic. The cabin door is made of clear safety glass, and the benches, which blend seamlessly with the walls, are wide enough to lie down on comfortably. Those who prefer a sitting position can also enjoy the same humidity and temperature from head to toe.





Customizable Steam Room

This is the right choice for anyone looking to fully customize a steam room's finishes to match their home's decor. We deliver a constructed, waterproofed pre-fabricated cabin that will slot right into the space—and you choose the porcelain tile, ceramic, granite or acrylic finish that matches your home's unique decor.



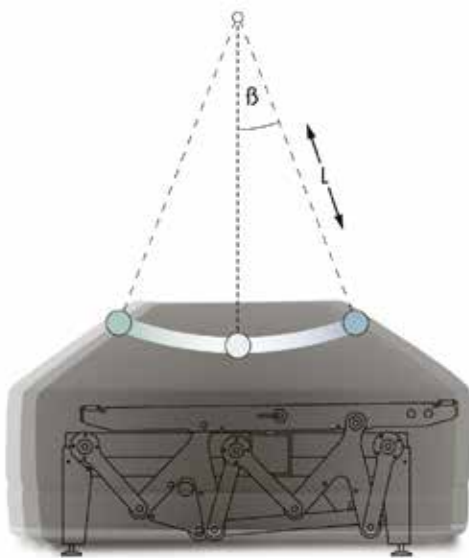
RELAXATION

CUTTING-EDGE ACCESSORIES & TECHNOLOGY
TO ELEVATE YOUR AT-HOME SPA.



designforleisure.com/residential

SWAY Sleep Lounger



SWAY was designed in collaboration with scientists from the Fraunhofer IAO. The motor runs almost silent for optimal comfort.

THE FIRST LOUNGER ENGINEERED TO ROCK YOU TO SLEEP

Relaxation is at the heart of any home wellness suite and every wellness area should be constructed with this key activity in mind. The SWAY's unique pendulum technology gently cradles you to sleep—for a rejuvenating daily power nap or as a precursor to bedtime.

The SWAY Sleep Lounger soothes you into a relaxing short nap with a gentle oscillating movement that has been engineered to sway at the optimum frequency for synchronizing and slowing the brain waves. The SWAY's pendulum swing was user tested and studied at Germany's Fraunhofer Institute, where users were monitored and shown to have a significantly improved Heart Rate Variability (HRV) within moments of laying down, allowing sleep to take hold much faster.



BRING THE POWER OF “POWER NAPS” INTO YOUR HOME

The SWAY is suitable as a resting lounge near the sauna/steam room or wherever you may want to catch a quick nap (some will even choose to use it to sleep through the night).

The lounge features a high-quality viscoelastic foam layer for an optimal fit to the body’s contours. The firmly padded layer is covered with waterproof, high-quality synthetic leather, with stitching in contrasting colors. The oscillating movement is provided by an electric drive with specially developed kinematics, lasered precision components and high-grade, long-lasting deep groove ball bearings.

SWAY SPECS

Power: 120V, 60 Hz, 150W

Size: 84” x 48” x 20” (LxWxH)

Wall Clearance: Minimum 18” on sides

Weight: Approximately 375 lbs.



AVAILABLE COLORS



LINEA Heated Lounger



WONDERFUL WARMTH, ERGONOMIC DESIGN

After leaving the sauna and taking an icy cold shower, nothing could be more pleasurable than stretching out and relaxing on a heated lounger.

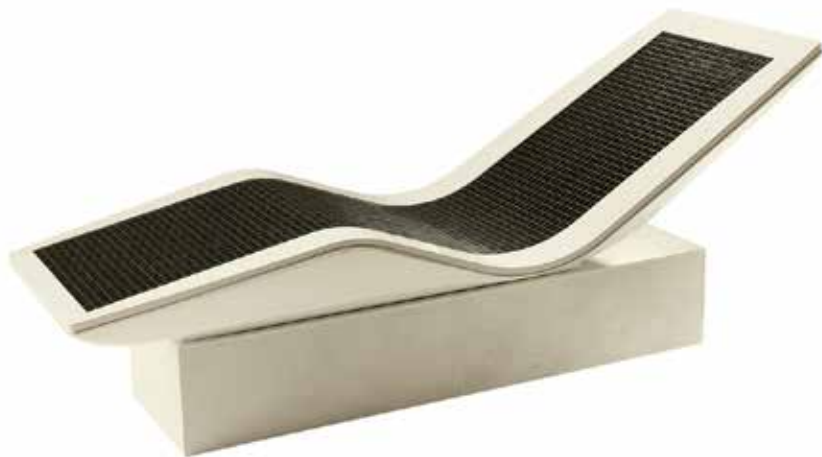
Our LINEA HEATED LOUNGER is ergonomically shaped to hug the body and can be warmed up before you lie down.

Available in a choice of six glass mosaic tile colors (white, green, black, purple, beige, blue) or with a beautiful teak finish, and two styles of bases, the lounger can be tailored to your individual preference and style.

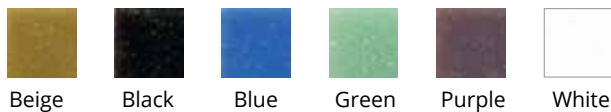


LINEA with optional teak finish and standard bridge base.

A Perfect Addition to Your Wellness Room



Mosaic Tile Colors



FEATURES

- Ergonomic shape hugs the body
- Generously sized laying surface with electric radiant heating system and programmable thermostat
- Bespoke design with easy to clean surfaces
- Finished in glass mosaic tiles or teak, sides in alpine white
- Neck cushion also available

LINEA SPECS

Power

120V

Lounger Dimensions

78.75" x 30" x 34" (LxWxH)

Wall Clearance

Minimum 4" clearance on all sides

MOLLIS® Sauna Cushions



YES, YOU CAN USE CUSHIONS IN A SAUNA

MOLLIS sauna cushions add luxurious wellness to any sauna and are a perfect accessory to your KLAFS custom sauna. Thanks to ingenious inserts and high-quality fabric, these pillows will make your sauna sessions cozier than ever and you can relax in complete confidence knowing that:

1. Fabric does not retain heat; meaning there is virtually no heat transfer from the cushions to your skin.
2. Pillow inserts do not retain moisture, and, therefore, remain dry and mold-resistant.

In addition, KLAFS MOLLIS cushions are washable, easy to disinfect, allergy friendly, and completely recyclable.





A.



B.



C.



D.

UNIQUE MOLLIS® TECHNOLOGY

Covers Made from TENCEL® Fabric

TENCEL is an eco-friendly fabric of botanic origin (extracted from wood) that is more absorbent than cotton, softer than silk, and cooler than linen. Unlike other fabrics that can not be used in a sauna because of the risk of mold and mildew, bacteria growth is virtually impossible with MOLLIS cushions. The fabric is also extremely heat resistant.

Inner Cushion Withstands Heat & Moisture

The MOLLIS insert is constructed from a 3D spacer fabric. The double-knit fabric is manufactured using state-of-the-art weaving technology that helps ensure the cushion does not retain heat or moisture. Therefore, cushions stay cool and dry even in high sauna temperatures.

Styles

A-B. MOLLIS Sauna Cushion: Available in Small & Large Square or Medium Lumbar

C. MOLLIS Sauna Neckroll

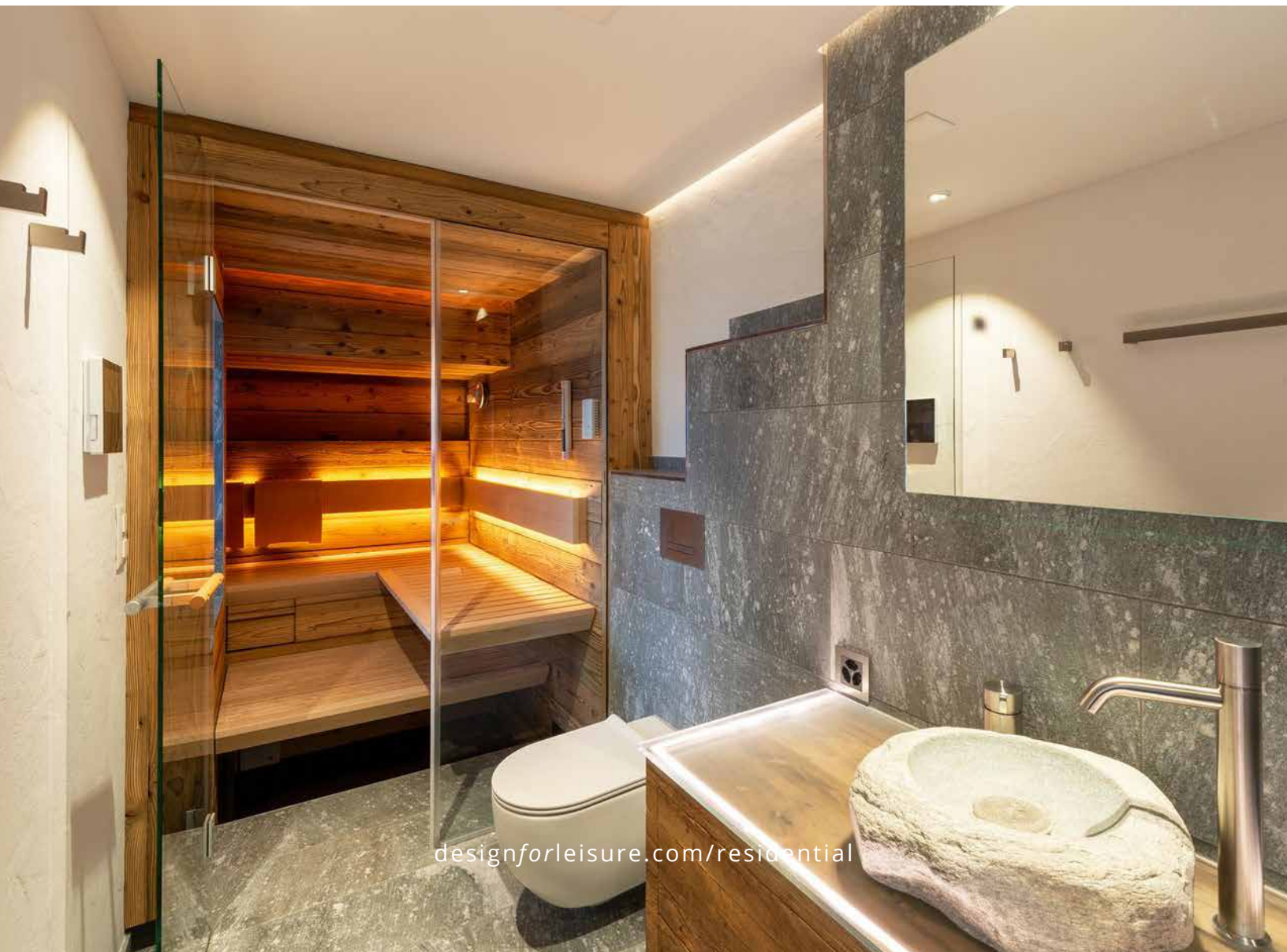
D. MOLLIS Sauna Mat: Available in Medium & Large

Colors

Blue, Brown, Ivory & Light Green

Inspiration

EXPLORE THE HEALTH BENEFITS AND LUXURIOUS
POSSIBILITIES OF AT-HOME WELLNESS.

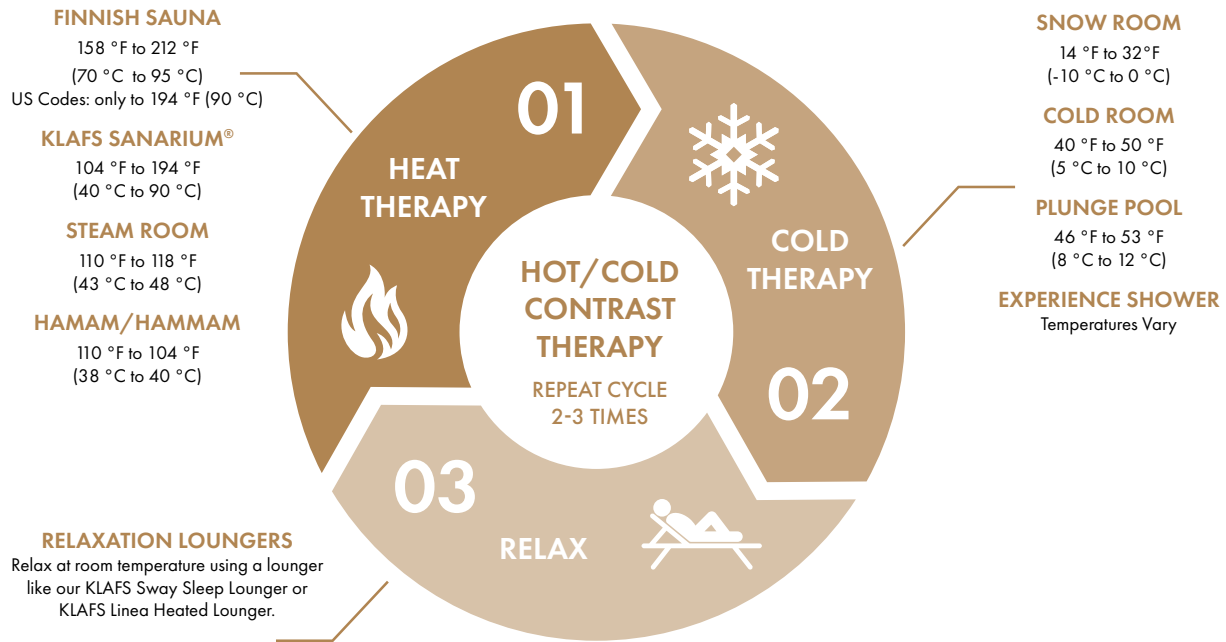


designforleisure.com/residential

Contrast Therapy

THE THERAPEUTIC COMBINATION OF HOT AND COLD

Design for Leisure transforms your home into a wellness sanctuary that both relaxes and invigorates your mind and body. The benefits of repeated cycles of contrast therapy are many, including decreased muscle soreness, increased blood flow and improved immune system response. The bottom line: it not only feels good, it does good.



HEAT THERAPY

The practice of warming up the body to then give it a good shock with a cold treatment is a centuries-old therapy. In the first few minutes in heat, muscles loosen, the mind quiets. As the heat builds, a detoxifying sweat breaks out and the heat starts to do its real work, penetrating deeply into the body. After 12-15 minutes, your body will crave the euphoric relief of freezing temperatures.



COLD THERAPY

Next immerse your body in freezing cold for as long as you can take it—a few minutes does the job! Some prefer the shock of a plunge pool, ice bath or cold shower, but as the benefits of cryotherapy (including pain reduction, improved immune function and overall resilience) become more mainstream, at-home spa suites are including more comfortable cold therapies, like a snow room, cold room or ice room (temperatures as low as 5°F).



RELAX

Rest and relaxation is essential during this process and especially on the last round of your hot/cold journey. Take a refreshing shower and then wrap yourself up in a warm towel or blanket and settle in on a KLAFS SWAY Sleep Lounger or LINEA Heated Lounger. A short (5-20 minute) rest allows your entire body the opportunity to fully recover, while encouraging the respiratory and cardiovascular systems to regenerate.

Enjoy 5-Star Luxury

BE INSPIRED BY KLAFS SAUNAS FOUND AT 5-STAR RESORTS THROUGHOUT THE WORLD, DESIGNED & BUILT BY DFL.



Faena Hotel, Miami Beach, Florida



Nizuc Hotel and Spa, Cancun, Mexico



Awana Spa Resorts World, Las Vegas, Nevada



CIVANA, Carefree, Arizona



The Spa at Villa La Coste, Provence, France



The Standard Spa, Miami Beach, Florida

KLAFS Quality Guaranteed

EUROPEAN-ENGINEERED, TESTED & APPROVED BY GLOBAL QUALITY STANDARDS



When buying a sauna, always look for RAL-tested quality. The Gütegemeinschaft Saunabau quality mark confirms that KLAFS Saunas are manufactured to the highest quality standards.



The Institut für Holztechnologie Dresden GmbH has certified that KLAFS real wood veneer panels do not contain formaldehyde and comply with all legal standards.



Many KLAFS products are also GS-certified, meaning that an independent third party has verified the conformity of a product's adherence to a set of safety and health requirements.



KLAFS worked with UL Solutions to obtain third-party, science-backed certification for our product range.



Blue Angel certification is awarded to environmentally-friendly products and services by an independent jury. All KLAFS Saunas in Canadian hemlock and Scandinavian spruce bear this seal of approval.



The Red Dot Design Award is one of the world's largest design competitions. The KLAFS Casena Sauna, S1 Sauna and Gesa Sauna were all awarded the coveted Red Dot award.



Design for Leisure

715 Discovery Boulevard, Suite 506

Cedar Park, Texas 78613

512.661.7000

info@designforleisure.com

designforleisure.com/residential

OFFICIAL PARTNER OF

KLAFS

MY SAUNA AND SPA